



## Brief Report of the Post Graduate Geography Field work-2025

### PGGR Paper- 10B (Urban Geography Field work for Part-II, January 2023 Batch)

Likewise earlier years, the PGGR Field work and PCPs related to preparation of Field Report (10B Urban Geography Practical) has been organized by the Faculty of the Department of Geography, School of Sciences, NSOU. In the year 2025, the field work for the PGGR Part-II (Paper-10B) held on 14 to 23 March, 2025 in the Kathmandu, Pokhara and surrounding areas of Nepal. A total of 52 students belongs to five PGGR study Centres (Chandernagore College [C-05], Sarojini Naidu College [E-06] and Ananda Chandra College [F-02], Raja N.L. Khan Women' College [B-03] and Haldia Govt. College [H-06] Study Centre) students were participating in the field work and completed all the assigned work under the supervision of **Dr. Biraj Kanti Mondal**. Like each and every year, face to face PCPs related to the paper had been scheduled before, during the field and post-field periods and all the concerned learners of five PGGR study centres. The PGGR term end practical examination of the paper is also conducted at the Kalyani RC. The details are mentioned below:

**Date of PGGR PCPs: 10B:** 8<sup>th</sup>, 9<sup>th</sup>, 10<sup>th</sup>, 11<sup>th</sup> and 12<sup>th</sup> May, 2025 (6 Hours/day)

**Supervisor/ Teacher:** **Dr. Biraj Kanti Mondal**, Assistant Professor of Geography, NSOU

**Filed Visit Area:** Kathmandu, Pokhara and surrounding areas of Nepal

**Venue of PCP:** RS-GIS laboratory and Pentagon building, Kalyani Regional Centre, NSOU.

*The photographs of the PCPs (Practical) are given below:*



Photo: Starting of field work with the students' group at Howrah station



# NETAJI SUBHAS OPEN UNIVERSITY

## SCHOOL OF SCIENCES

H.Q.: DD-26, Salt Lake, Sector-I, Kolkata - 700 064

City Campus: K-2, Bidhannagar Fire Station, Sector- V, Salt Lake, Kolkata -700 091

Kalyani Campus: First Floor, Academic Building, Kalyani Ghoshpara, Kalyani -741235

Website: [www.wbnsou.ac.in](http://www.wbnsou.ac.in)

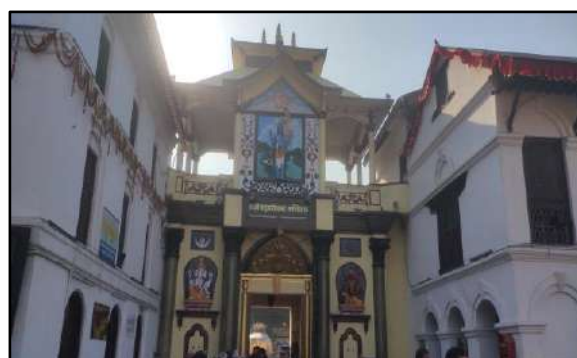


Photo: Pashupatinath Temple: Entrance and Temple gate in Kathmandu, Nepal

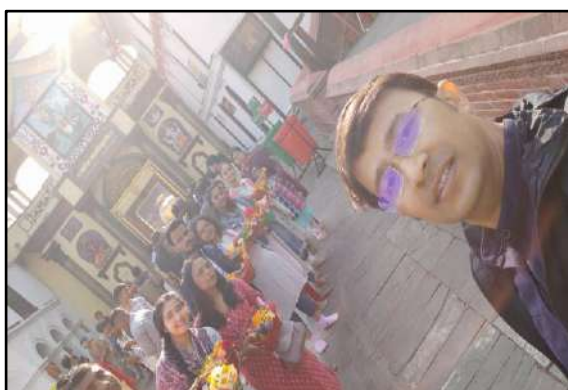


Photo: Pashupatinath Temple Gate and Swaminarayan Temple in Kathmandu, Nepal

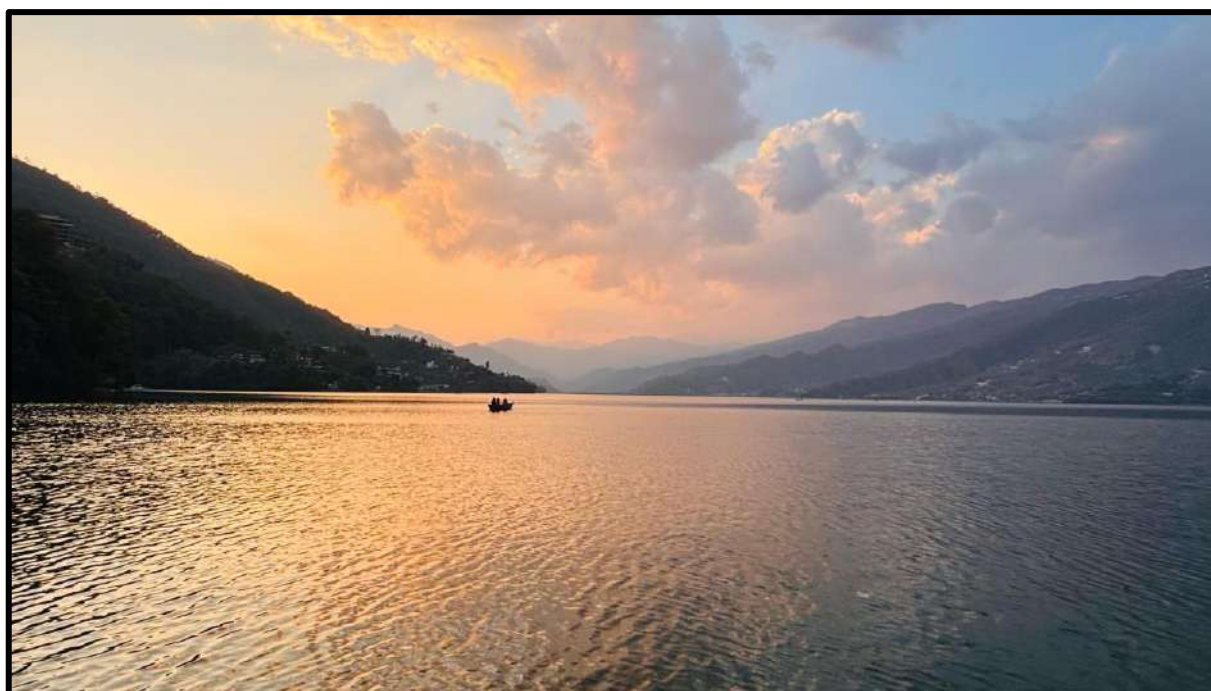


Photo: Beautiful Phewa Lake, Pokhara, Nepal





# NETAJI SUBHAS OPEN UNIVERSITY

## SCHOOL OF SCIENCES

H.Q.: DD-26, Salt Lake, Sector-I, Kolkata - 700 064

City Campus: K-2, Bidhannagar Fire Station, Sector- V, Salt Lake, Kolkata -700 091

Kalyani Campus: First Floor, Academic Building, Kalyani Ghoshpara, Kalyani -741235

Website: [www.wbnsou.ac.in](http://www.wbnsou.ac.in)



Photo: Boats and boating in the beautiful Phewa Lake, Pokhara, Nepal



Photo: Evening beauties of Phewa Lake and worshipping in the evening, Pokhara, Nepal



Photo: Glimpses of beautiful Sunrise at Nagarkot, Kathmandu, Nepal

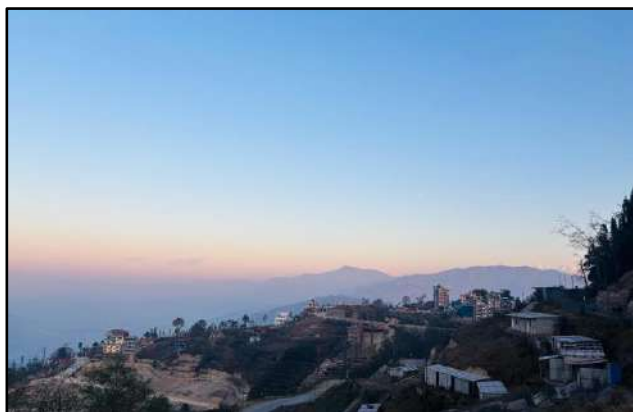


Photo: Beautiful landscape during sunrise at Nagarkot and Mount Annapurna, Kathmandu, Nepal





# NETAJI SUBHAS OPEN UNIVERSITY

## SCHOOL OF SCIENCES

H.Q.: DD-26, Salt Lake, Sector-I, Kolkata - 700 064

City Campus: K-2, Bidhannagar Fire Station, Sector- V, Salt Lake, Kolkata -700 091

Kalyani Campus: First Floor, Academic Building, Kalyani Ghoshpara, Kalyani -741235

Website: [www.wbnsou.ac.in](http://www.wbnsou.ac.in)



Photo: Heritage and temple sculpture in Bhaktapur, Kathmandu, Nepal



Photo: Foreign tourists and temple sculpture in Bhaktapur in Kathmandu, and Gupteshwor temple, Pokhara, Nepal



Photo: Students in Raxaul of India (Entry point of Nepal) and group photo near Mahendra Cave in Nepal



Photo: Students groups and inside view of Mahendra Cave in Kathmandu, Nepal





# NETAJI SUBHAS OPEN UNIVERSITY

## SCHOOL OF SCIENCES

H.Q.: DD-26, Salt Lake, Sector-I, Kolkata - 700 064

City Campus: K-2, Bidhannagar Fire Station, Sector- V, Salt Lake, Kolkata -700 091

Kalyani Campus: First Floor, Academic Building, Kalyani Ghoshpara, Kalyani -741235

Website: [www.wbnsou.ac.in](http://www.wbnsou.ac.in)

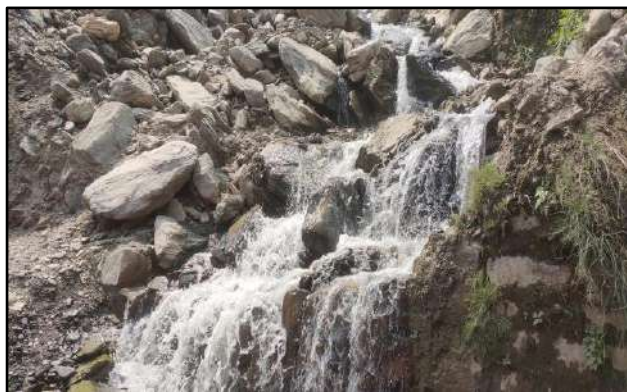


Photo: Significant Stalactite in the limestone rich in Mahedra cave and outside Devi's waterfall, Nepal

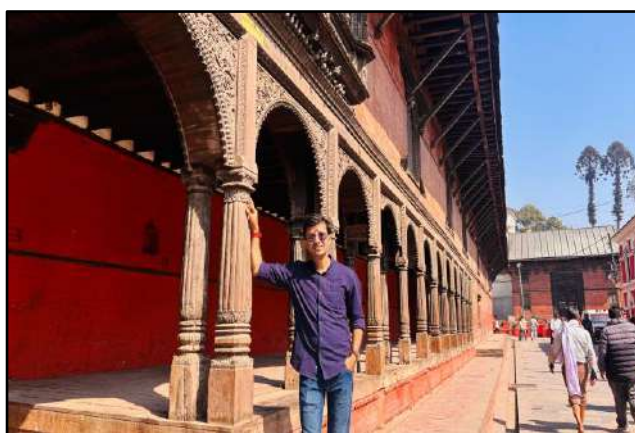


Photo: Significant rock structure in Devi's waterfall inside the Mahedra cave and sculpture of Pashupatinath temple, Nepal



Photo: Kathmandu, The Capital of Nepal in a wide angle





# NETAJI SUBHAS OPEN UNIVERSITY

## SCHOOL OF SCIENCES

H.Q.: DD-26, Salt Lake, Sector-I, Kolkata - 700 064

City Campus: K-2, Bidhannagar Fire Station, Sector- V, Salt Lake, Kolkata -700 091

Kalyani Campus: First Floor, Academic Building, Kalyani Ghoshpara, Kalyani -741235

Website: [www.wbnsou.ac.in](http://www.wbnsou.ac.in)



Photo: Beautiful Mountain Annapurna in Nepal



Photo: PG Geography Field work students' group in the garden of Mahendra Cave in Nepal



# NETAJI SUBHAS OPEN UNIVERSITY

## SCHOOL OF SCIENCES

H.Q.: DD-26, Salt Lake, Sector-I, Kolkata - 700 064

City Campus: K-2, Bidhannagar Fire Station, Sector- V, Salt Lake, Kolkata -700 091

Kalyani Campus: First Floor, Academic Building, Kalyani Ghoshpara, Kalyani -741235

Website: [www.wbnsou.ac.in](http://www.wbnsou.ac.in)

---

### ***Significance:***

The post graduate Geography (PGGR) paper 10B (Special Paper) is completely practical paper of 50 marks of the Part-II syllabi and there're, all the concerned learners are participating the field work every year. The university is offering urban geography as a special paper and all the learners are able to learn the theoretical as well as practical knowledge. The learners are appearing this field work and related PCPs after completing the two theory papers and one practical paper and therefore, this knowledge base helps the learners to understand its field experience in a better way. This year the field work was arranged in the Kathmandu, Pokhara and surrounding areas of Nepal. The participated 52 learners are able to successfully complete the field work and able to gain a huge practical knowledge of urban geography. In this paper, the concept of RS-GIS, which has been studied in the part-II syllabi, is also required for geospatial analysis of the dataset and map making. It is to be revealed that Biraj Kanti Mondal, Assistant Professor of Geography, NSOU has arranged the field work and related PCPs as the supervisor and coordinator and acted as the class teacher/instructor in this paper for the preparation of the field report. To maintain the quality of the practical paper, the PCPs is organized centrally at the university campus (Kalyani RC) and a quality check is being taken by the class teacher and performance of the learners is found satisfactory. Every year the Department of Geography is conducting such field work and ensuring the quality teaching-learning system and it is reflected by the satisfactory feedback from the learners which helps to improve the university's brilliances.

*Report prepared by:*

**Biraj Kanti Mondal**

Assistant Professor of Geography

School of Sciences, NSOU

*Date: 19.06.2025*